

# Executive Summary:

The development of this Spatial Development Framework has followed a set process that consisted of gaining an in-depth understanding of the policy context in which the municipality exists and the development of the early vision directives.

## FOCUS AREA

The Ditsobotla Local Municipality is in the North West Province of South Africa. The municipality forms part of the Ngaka Modiri Molema District. The Ditsobotla Local Municipality is centrally located within the province and is traversed by the N14 and R503 connecting to Mahikeng.

The municipality is made up of numerous small towns and rural settlements, mainly located in the southern half of the municipality and along the N14. The municipality is largely rural but also features strong small towns.

## METHODOLOGY

After gaining an improved understanding of the area, context and directives, a contextual and spatial analysis of the municipality was conducted on a national, provincial, district and local scale. Various spatial challenges and opportunities in the municipality were identified.

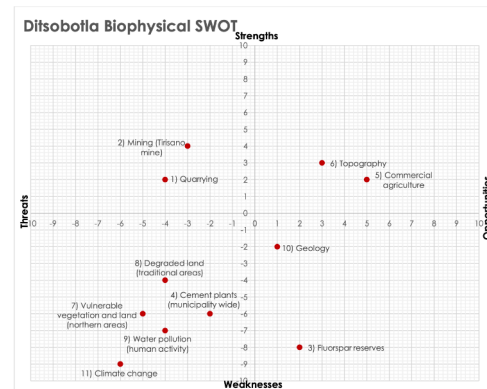
The next step was to utilise the findings to develop a number of spatial proposals that are realistic and able to facilitate progress. The final component of the Spatial Development Framework was the development of an implementation framework.

## DEVELOPMENT PLANS

The development plans allocated potential areas where improvements and spatial processes could occur.

## CHAPTER OUTLINE

- **Chapter 2** - stipulates the legal and policy applicability of this document.
- **Chapter 3** - outlines the institutional, policy and strategy context.
- **Chapter 4** - defines spatial challenges and opportunities and presents a synopsis of the municipality's analysis and the useful outcomes derived from it.
- **Chapter 5** - includes spatial proposals, which present a number of approaches to shaping the municipality's future through a vision, conceptual approach and land use budget.
- **Chapter 6** - explains the implementation of spatial proposals over the following decade and the responsibilities for carrying it out.
- This chapter provides generic information about the Ditsobotla context and why a Spatial Development Framework (SDF) should be developed.
- It also describes the stakeholder engagement process to be followed in compiling and developing the Ditsobotla Local Municipality SDF.

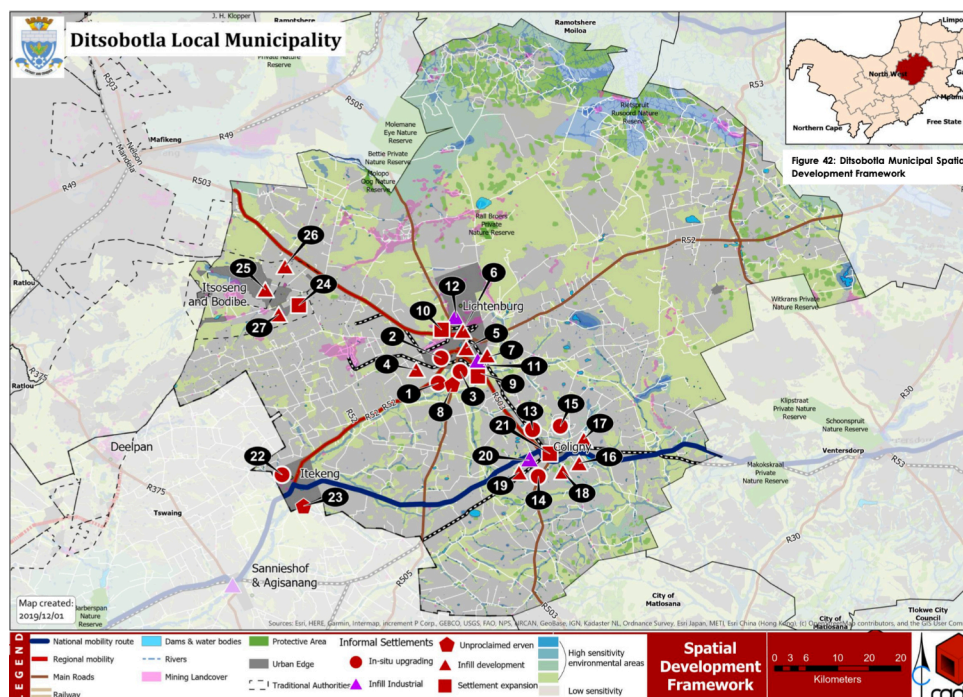
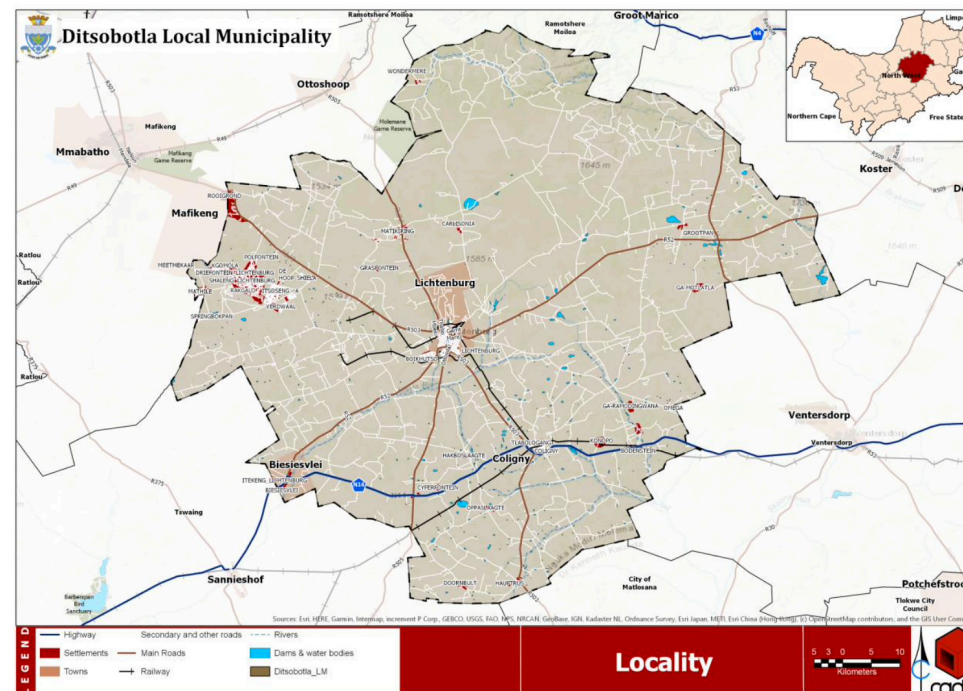


The above SWOT analysis displays the areas of focus for redress and improvement in the SDF.

## CLIENT FEEDBACK

“Cadre Plan executed the project to a high standard and the project was completed in accordance with its terms of reference and aligned to relevant legislation. We found Cadre Plan to be pro-active, open to change and reliable. The company managed the project very well during the pandemic and was able to adapt in order to reach the desired outcome.”

-Dries Goosen,  
Chief Town & Regional Planner  
(DALRRD)



The table below illustrates the number of hectares per year for each process.

DITSOBOTLA SETTLEMENT EXPANSION AND IN SITU UPGRADING SUMMARY													
Process	2020	2021	2022	2023	2024	2025	2025 total	2026	2027	2028	2029	2030	2030 total
Submission into the SPLUMA application process (not yet surveyed) - 12 months	159	96	0	22	0	200	477	175	86	0	0	0	261
Approval by Surveyor General - 8 months	0	159	96	0	22	0	277	50	125	146	140	0	461
Township proclaimed (township establishment completed) - 4 months	0	159	96	0	22	0	277	50	125	146	140	0	461
Engineering services (no top structure) - 6 months	0	0	159	96	0	22	277	0	50	125	146	140	461
Dwelling units developed (top structure included) - 6 months	Discretionary												

# Municipal Spatial Development Framework (SDF) for Ditsobotla Local Municipality

May 2021

## Key Information:

### SPATIAL STRATEGIES

The spatial strategies developed for the SDF are informed by the community (public participation), Ngaka Modiri Molema District SDF and the status quo analysis conducted in 2019. In addition, to ensure further alignment, the spatial strategies of the district and local municipality are informed by the five strategic objectives of the province.

- Strategy 1** Settlement structure and hierarchy
- Strategy 2** Protected areas
- Strategy 3** Areas of critical biodiversity
- Strategy 4** Tourism areas
- Strategy 5** Agricultural focus areas
- Strategy 6** Mining areas
- Strategy 7** Revitalisation of rural areas
- Strategy 8** Service delivery and maintenance
- Strategy 9** Catalytic areas that offer extensive



Five strategic objective areas as identified by the PSDF (NWPG, 2017)

## Project Details:

- Location:** Ditsobotla Local Municipality, North West
- Time-frame:** 8 months
- Project lead:** Reinier Minny
- Key Support:** Dylan La Loux, James Joubert
- Core Consulting Team:** The Cadre Group  
081 265 0800  
reinier@cadreplan.co.za



- Project Sponsor:** DALRRD
- Client:** Ditsobotla Local Municipality

