

Executive Summary:

In terms of the Local Government: Municipal Systems Act, 2000, municipalities must undertake developmental planning. It further provisions that each municipality must adopt a single inclusive and strategic plan (IDP) to develop the municipality.

Furthermore, the IDP must reflect a spatial development framework which must include the provision of basic guidelines for land use management systems. The development of the Ratlou local municipality SDF follows these provisions to bring about the much-needed social and economic transformation stressed in the legislation.

LOCATION & CHARACTERISTICS

Ratlou is a rural municipality under Ngaka Modiri District Municipality in the North West province. The municipality is home to a section of the Molopo River, forming a physical border between South Africa and Botswana.

Ratlou comprises isolated rural settlements clustered along the north and south borders of the municipality and has a high tourism and cultural potential. In addition, mining activity contributes to the employment of the residents in the municipality.

The development of the spatial development framework for this municipality embraced and appreciated the unique character, social and economic role rural areas have. The focus of the spatial directives would be the enhancement of municipal identity and character, explore and support economic potential for its rural residents.

POPULATION

In 2011, the population of the municipality amounted to 107 315 residents. Population growth estimates demonstrate that the municipality will likely have about 124 000 inhabitants by 2030 should rural-urban migration be observed at medium advancements.

SPATIAL DEVELOPMENT FRAMEWORK (SDF)

A spatial development framework (SDF) is a land use strategy tool that is used to manage physical development in a region or municipality.

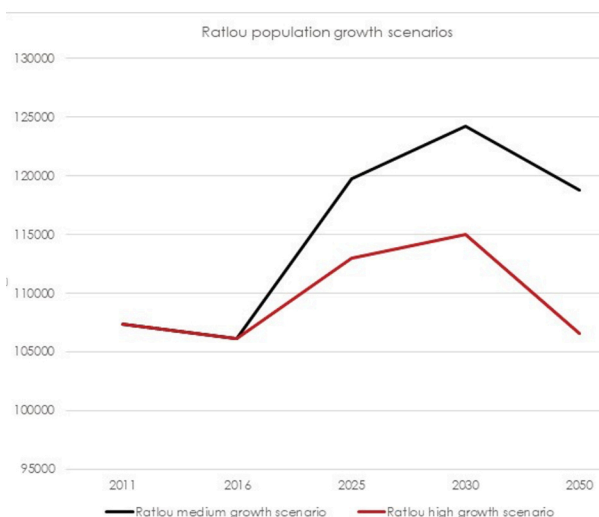
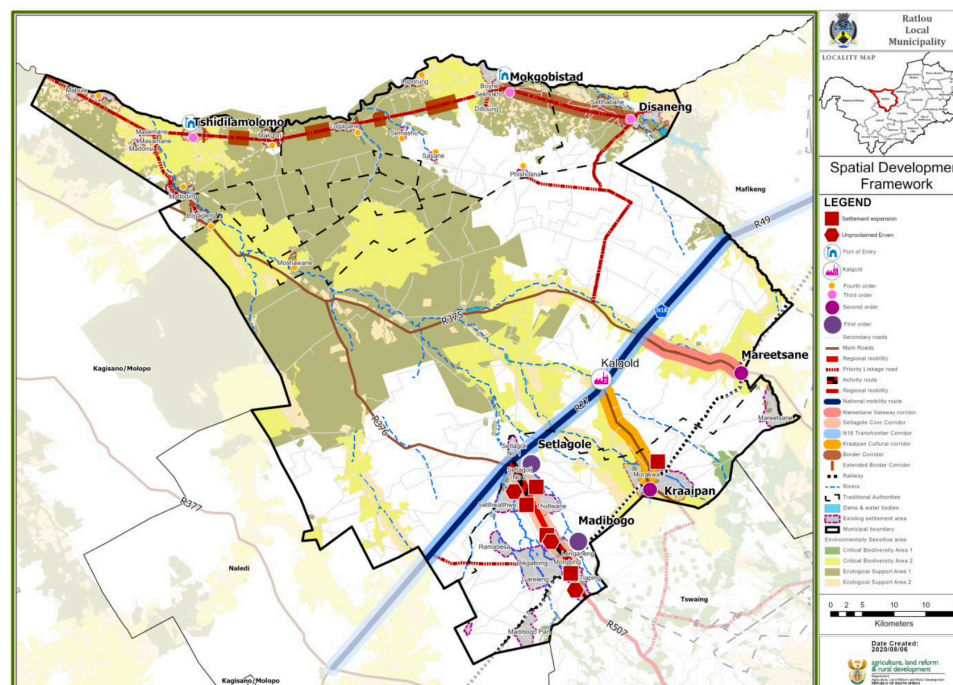
An SDF seeks to support the implementation of the Integrated Development Plan (IDP) and aims to illustrate the IDP with all its components.

The development of the spatial development framework for this municipality embraced and appreciated the area's unique character and social and economic role. The spatial directives focused on enhancing the municipal identity and character, while exploring its economic potential.

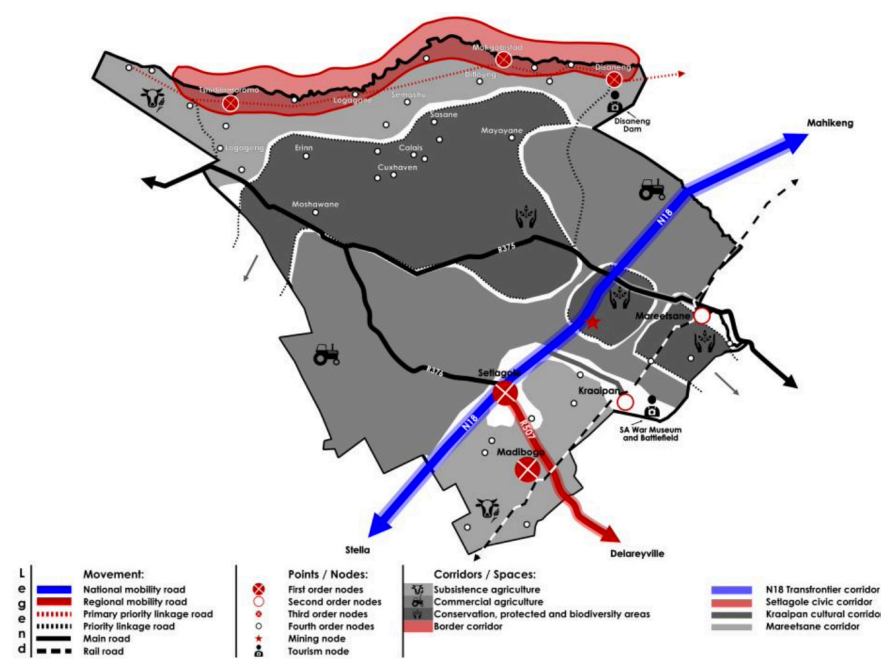
Both economic activity and human settlements expansion threaten the rural landscape and natural elements. Accordingly, the spatial development framework focused on human settlements support interventions, local economic development, and environmental conservation.

KEY THEMES OF THE SDF

- Rural revitalisation:** The framework provides for the spatial targeting of investment in existing rural economic centres. This nodal economic development is supported by strong and resourceful transportation links to facilitate economic units (fresh produce, mineral commodities, and commuters) to promote tourism access.
- Beneficiation initiatives:** Beneficiation initiatives of the mining activity are likely to spark more economic activity and settlement expansion. A strong relationship between the local and traditional authorities is encouraged to direct human settlement expansion that is supported with adequate services and protect natural and agricultural land.



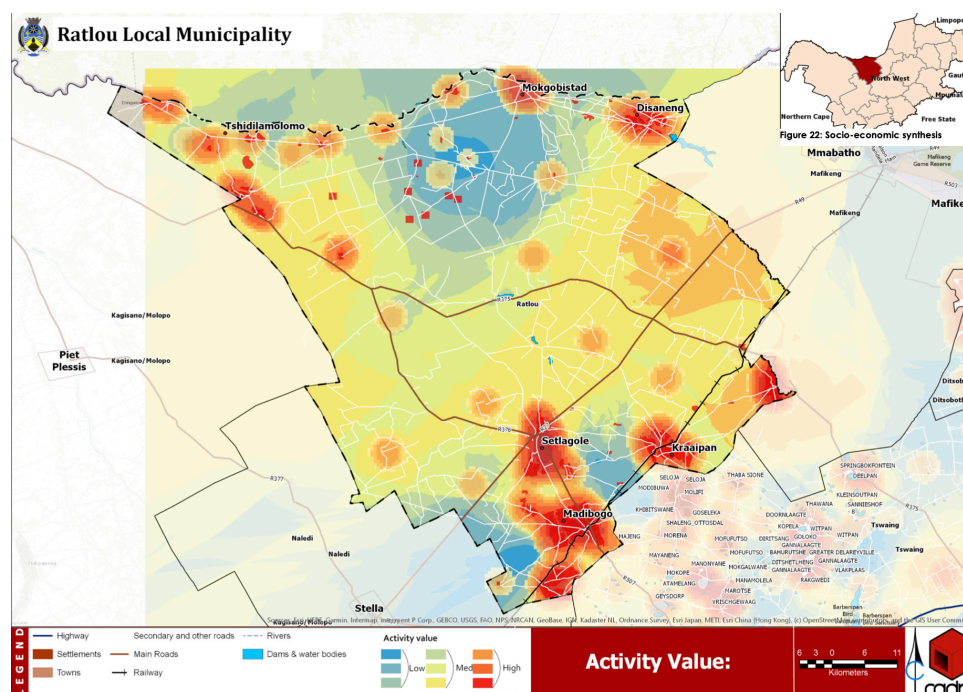
Ratlou Local Municipality Medium and high growth scenarios (CSIR, 2019) with adaptations.



CLIENT FEEDBACK

“Cadre Plan executed the project to a high standard and the project was completed in accordance with its terms of reference and aligned to relevant legislation. We found Cadre Plan to be pro-active, open to change and reliable. The company managed the project very well during the pandemic and was able to adapt in order to reach the desired outcome.”

**-Dries Goosen,
Chief Town & Regional Planner
(DALRRD)**



Municipal Spatial Development Framework (SDF) for Ratlou Local Municipality

October 2020

Key Information:

The development of this Spatial Development Framework has followed a set process that consisted of gaining an in-depth understanding of the policy context in which the municipality exists and the development of early vision directives.

A contextual and spatial analysis of the municipality was also conducted. Several spatial challenges and opportunities in the municipality were identified. The next step was to utilise the findings to develop a number of spatial proposals. The final component of the Spatial Development Framework was the development of an implementation framework.

GENERAL STATISTICS

Population 2011: 107 315

Population 2030: 124 000

District unemployment rate: 52.4%

Households: 30 000

Five strategic objective areas as identified by the PSDF (NWPG, 2017)



Project Details:

Location: Ratlou Local Municipality, North West

Time-frame: 8 months

Project lead: Reinier Minny

Key Support: Dylan La Loux, James Joubert

Core Consulting: The Cadre Group

081 265 0800

Team: reinier@cadreplan.co.za



cadre

Project Sponsor: DALRRD

Client: Ratlou Local Municipality



Department of Agriculture, Land Reform and Rural Development
REPUBLIC OF SOUTH AFRICA

